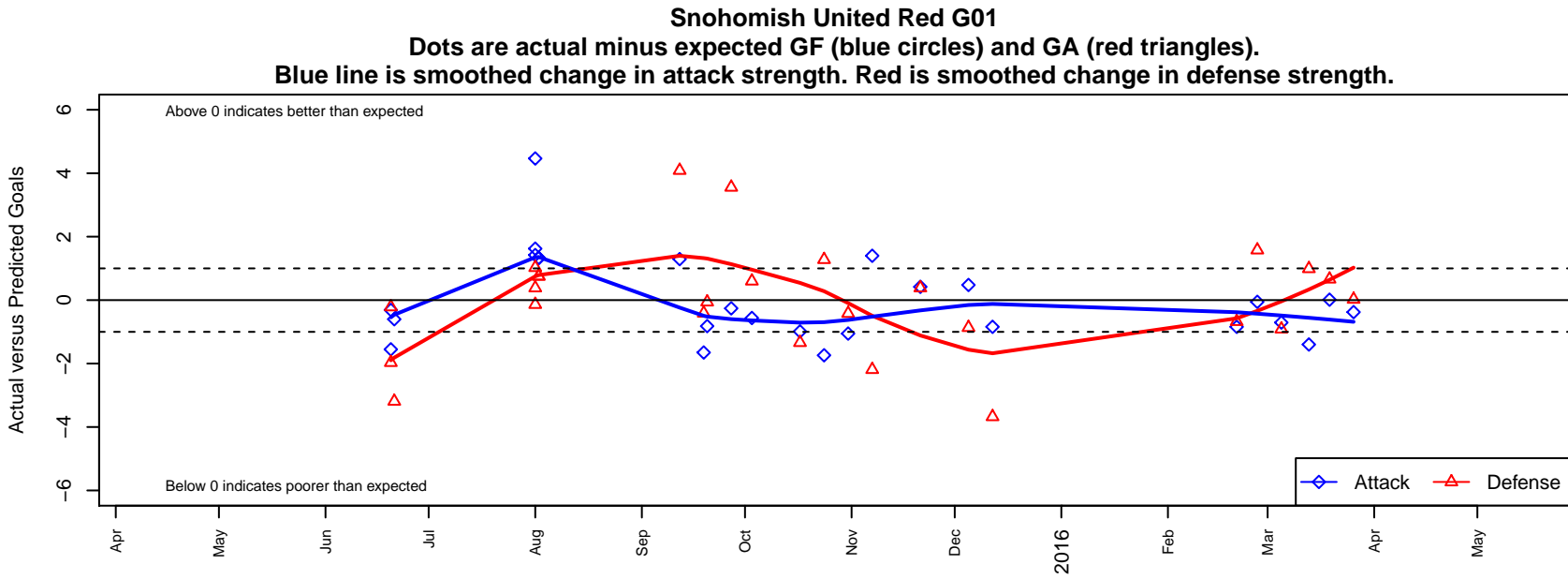


Snohomish United Red G01

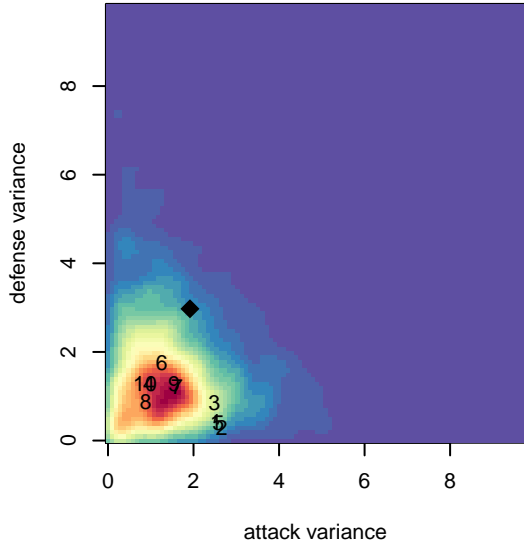
Snohomish Youth SC
 Snohomish, WA
 G01 total strength=757
 attack=0.98 defense=0.76
 fall league = NPSL Div 2 U14
 spr league = Spr NPSL Div 2 U14

alt names used:

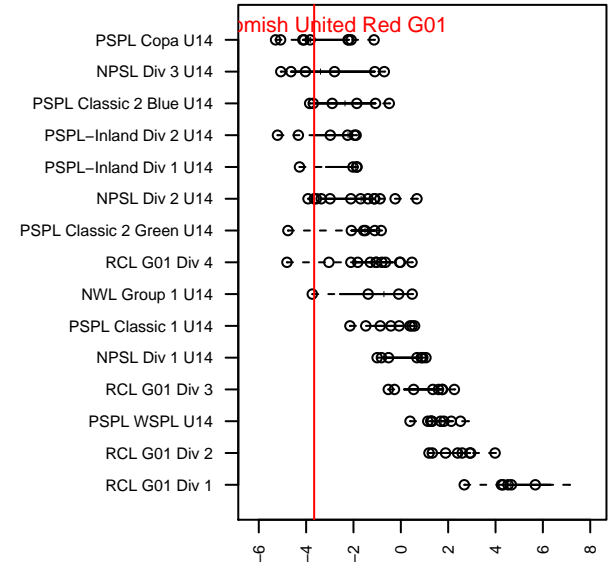
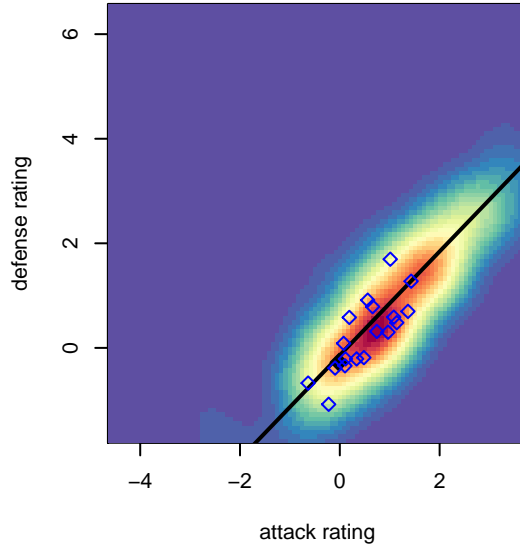
Venues played:
 2015 Snohomish United Invt Silver
 2015 Strawberry Classic GU14
 2015 NPSL Division 2 U14
 2015 Spr NPSL Division 2 U14



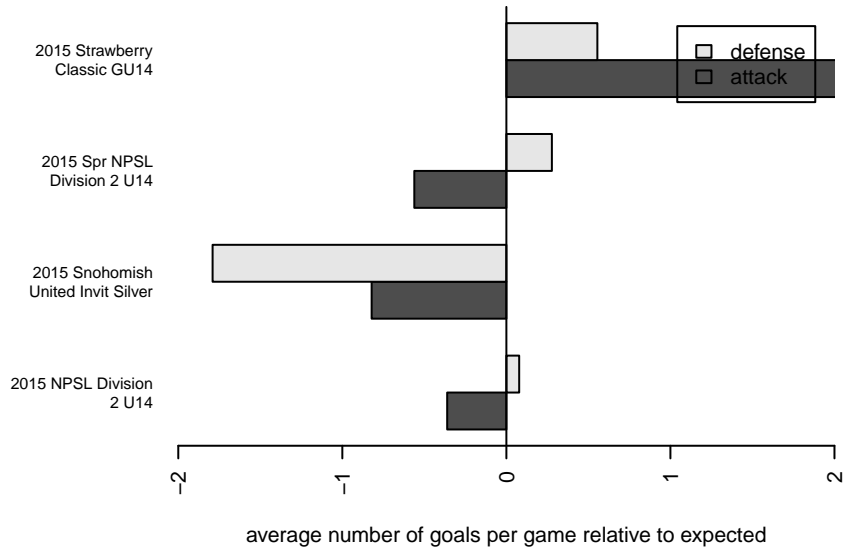
**attack and defense variance (black dot)
relative to other teams
and top 10 in region**



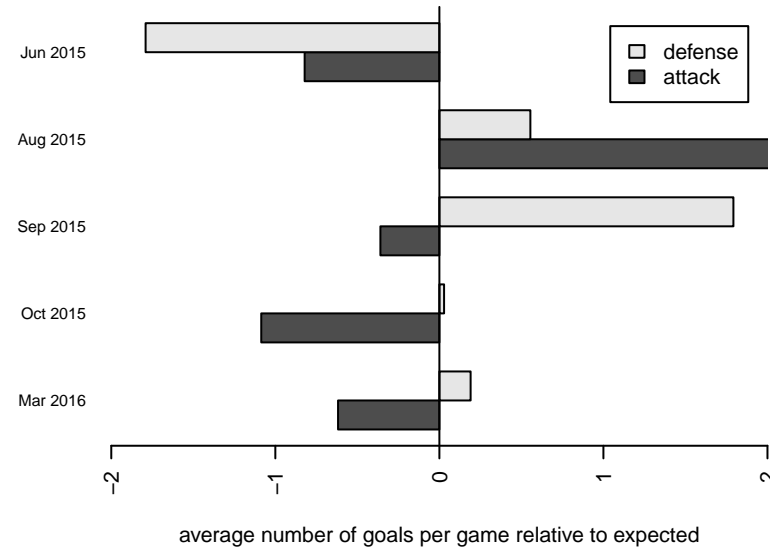
**attack and defense rating
relative to others at age
and all opponents in last 13 months**



Performance relative to 13 month average



Performance relative to 13 month average



date	home		away		venue	pred.home	pred.away
2016-03-26	Granite Falls Thunderbirds G01	2	Snohomish United Red G01	1	2015 Spr NPSL Division 2 U14	2.02	1.38
2016-03-19	Snohomish United Red G01	1	Lake Hills Extreme G01	2	2015 Spr NPSL Division 2 U14	0.99	2.66
2016-03-13	Snohomish United Red G01	1	Bremerton United G01	0	2015 Spr NPSL Division 2 U14	2.40	0.99
2016-03-05	MIFC Thunder G01	6	Snohomish United Red G01	0	2015 Spr NPSL Division 2 U14	5.09	0.71
2016-02-27	Snohomish United Red G01	1	Mukilteo Rush G01	0	2015 Spr NPSL Division 2 U14	1.05	1.58
2016-02-21	Kent United White G01	5	Snohomish United Red G01	0	2015 Spr NPSL Division 2 U14	4.32	0.84
2015-12-12	Snohomish United Red G01	0	Kent United White G01	8	2015 NPSL Division 2 U14	0.84	4.32
2015-12-05	Seattle United Shoreline Blue G01	3	Snohomish United Red G01	1	2015 NPSL Division 2 U14	2.14	0.52
2015-11-21	Snohomish United Red G01	2	North Whidbey Islanders G01	1	2015 NPSL Division 2 U14	1.58	1.38
2015-11-07	Seattle United NE Blue G01	4	Snohomish United Red G01	2	2015 NPSL Division 2 U14	1.81	0.60
2015-10-31	Snohomish United Red G01	0	Mukilteo Rush G01	2	2015 NPSL Division 2 U14	1.05	1.58
2015-10-24	Snohomish United Red G01	0	Tracyton Silver G01	0	2015 NPSL Division 2 U14	1.74	1.28
2015-10-17	Lake Hills Extreme G01	4	Snohomish United Red G01	0	2015 NPSL Division 2 U14	2.66	0.99
2015-10-03	Snohomish United Red G01	0	Storm King G01	2	2015 NPSL Division 2 U14	0.56	2.60
2015-09-27	NSC Reign G01	0	Snohomish United Red G01	0	2015 NPSL Division 2 U14	3.56	0.26
2015-09-20	Seattle United W Blue G01	4	Snohomish United Red G01	0	2015 NPSL Division 2 U14	3.94	0.82
2015-09-19	Snohomish United Red G01	0	Whatcom FC Rangers White G01	2	2015 NPSL Division 2 U14	1.65	1.59
2015-09-12	MIFC Thunder G01	1	Snohomish United Red G01	2	2015 NPSL Division 2 U14	5.09	0.71
2015-08-02	PSA Force G01	3	Snohomish United Red G01	2	2015 Strawberry Classic GU14	3.75	0.67
2015-08-02	PSA Force G01	3	Snohomish United Red G01	2	2015 Strawberry Classic GU14	3.75	0.67
2015-08-01	North Whidbey Islanders G01	1	Snohomish United Red G01	3	2015 Strawberry Classic GU14	1.38	1.58
2015-08-01	Granite Falls Thunderbirds G01	1	Snohomish United Red G01	3	2015 Strawberry Classic GU14	2.02	1.38
2015-08-01	Snohomish United Red G01	8	CSC Velocity White G01	1	2015 Strawberry Classic GU14	3.54	0.86
2015-06-21	Seattle United NE Blue G01	5	Snohomish United Red G01	0	2015 Snohomish United Invit Silver	1.81	0.60
2015-06-20	NWN Blue G01	4	Snohomish United Red G01	0	2015 Snohomish United Invit Silver	2.03	1.55
2015-06-20	Steamboat Springs G01	6	Snohomish United Red G01	0	2015 Snohomish United Invit Silver	5.79	0.31